

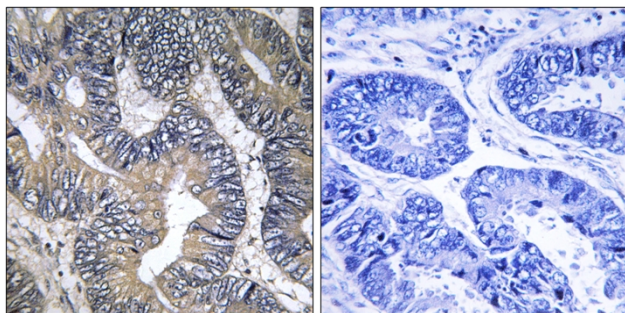


GTPBP2 Polyclonal Antibody

Catalog No	YP-Ab-16167
Isotype	IgG
Reactivity	Human;Mouse
Applications	IHC;IF;ELISA
Gene Name	GTPBP2
Protein Name	GTP-binding protein 2
Immunogen	The antiserum was produced against synthesized peptide derived from human GTPBP2. AA range:31-80
Specificity	GTPBP2 Polyclonal Antibody detects endogenous levels of GTPBP2 protein.
Formulation	Liquid in PBS containing 50% glycerol, 0.5% BSA and 0.02% sodium azide.
Source	Polyclonal, Rabbit,IgG
Purification	The antibody was affinity-purified from rabbit antiserum by affinity-chromatography using epitope-specific immunogen.
Dilution	IHC: 1/100 - 1/300. ELISA: 1/40000.. IF 1:50-200
Concentration	1 mg/ml
Purity	≥90%
Storage Stability	-20°C/1 year
Synonyms	GTPBP2; GTP-binding protein 2
Observed Band	
Cell Pathway	intracellular,intracellular membrane-bounded organelle,
Tissue Specificity	Predominantly expressed in thymus, spleen, and testis. Expressed at lower levels in brain, lung, kidney, and ovary.
Function	induction:Up-regulated by IFN-gamma in human monocytic cell line THP-1.,similarity:Belongs to the GTPBP1 GTP-binding protein family.,tissue specificity:Predominantly expressed in thymus, spleen, and testis. Expressed at lower levels in brain, lung, kidney, and ovary.,
Background	GTP-binding proteins, or G proteins, constitute a superfamily capable of binding GTP or GDP. G proteins are activated by binding GTP and are inactivated by hydrolyzing GTP to GDP. This general mechanism enables G proteins to perform a wide range of biologic activities.[supplied by OMIM, Jan 2003],
matters needing attention	Avoid repeated freezing and thawing!

Usage suggestions

This product can be used in immunological reaction related experiments. For more information, please consult technical personnel.

Products Images

Immunohistochemistry analysis of paraffin-embedded human colon carcinoma tissue, using GTPBP2 Antibody. The picture on the right is blocked with the synthesized peptide.